

# WAMURAN IRRIGATION SCHEME CONSTRUCTION NEWSLETTER

March 2022



Unitywater

Serving you today, investing in tomorrow.



Unitywater is building a recycled water pipeline that will provide year-round water security for a number of farmers in the Wamuran region, while sustainably managing wastewater from our Caboolture South Sewage Treatment Plant (STP).

Construction is now underway on the Wamuran Irrigation Scheme, which will use recycled water from the Caboolture South STP to irrigate a number of farms in the Wamuran region. The Scheme will reduce nutrient loads to the marine environment, provide water security for local business irrigators' and increase employment in the Wamuran agricultural district.

The Scheme is being built by the Wamuran Irrigation Scheme Joint Venture – made up of construction contractor, Pensar, and two local growers, Twin View Turf and Pinata Farms. The joint venture was awarded a contract in October 2019 to assist Unitywater to design and construct the scheme, following an open-market tender process.

A thorough planning process was undertaken to ensure the project is delivered in an economically and environmentally sustainable way, with minimal impact on local communities. We will continue to work closely with local residents and businesses to update you about the project as it progresses.

For more information about the Scheme, please refer to the attached Fact Sheet.

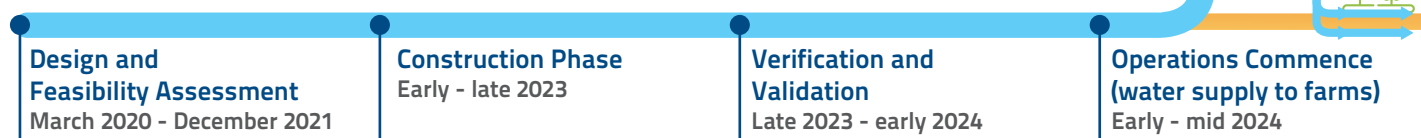
## Construction

Construction has now commenced, with activity separated into three zones at Caboolture, Wamuran and Moodlu Quarry.

Traffic management and signage will be in place around construction zones to alert drivers and pedestrians to changed conditions.

Construction is expected to be complete in late 2023 and the Scheme operational from early 2024.

## Project Milestones



## For further information

Contact the construction team on 1300 629 170  
or email [wamuran@pensar.com.au](mailto:wamuran@pensar.com.au)

Please see our website at:  
<http://www.unitywater.com/wamuran>

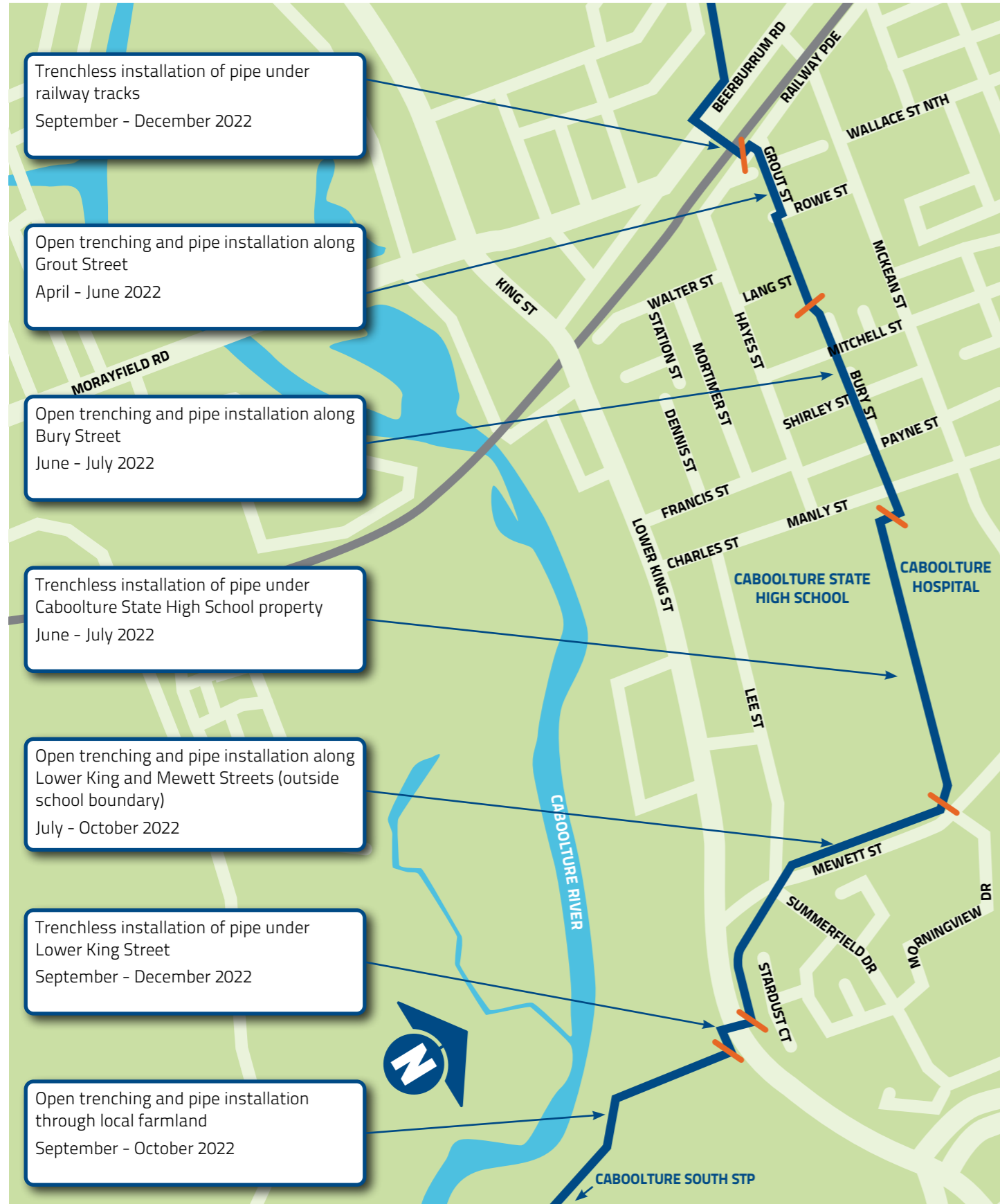




## CABOOLTURE WORKS

Wastewater from the Caboolture South STP will be treated in a disinfection facility before it is transferred via a 10km pipeline through Caboolture to the Moodlu Quarry storage facility

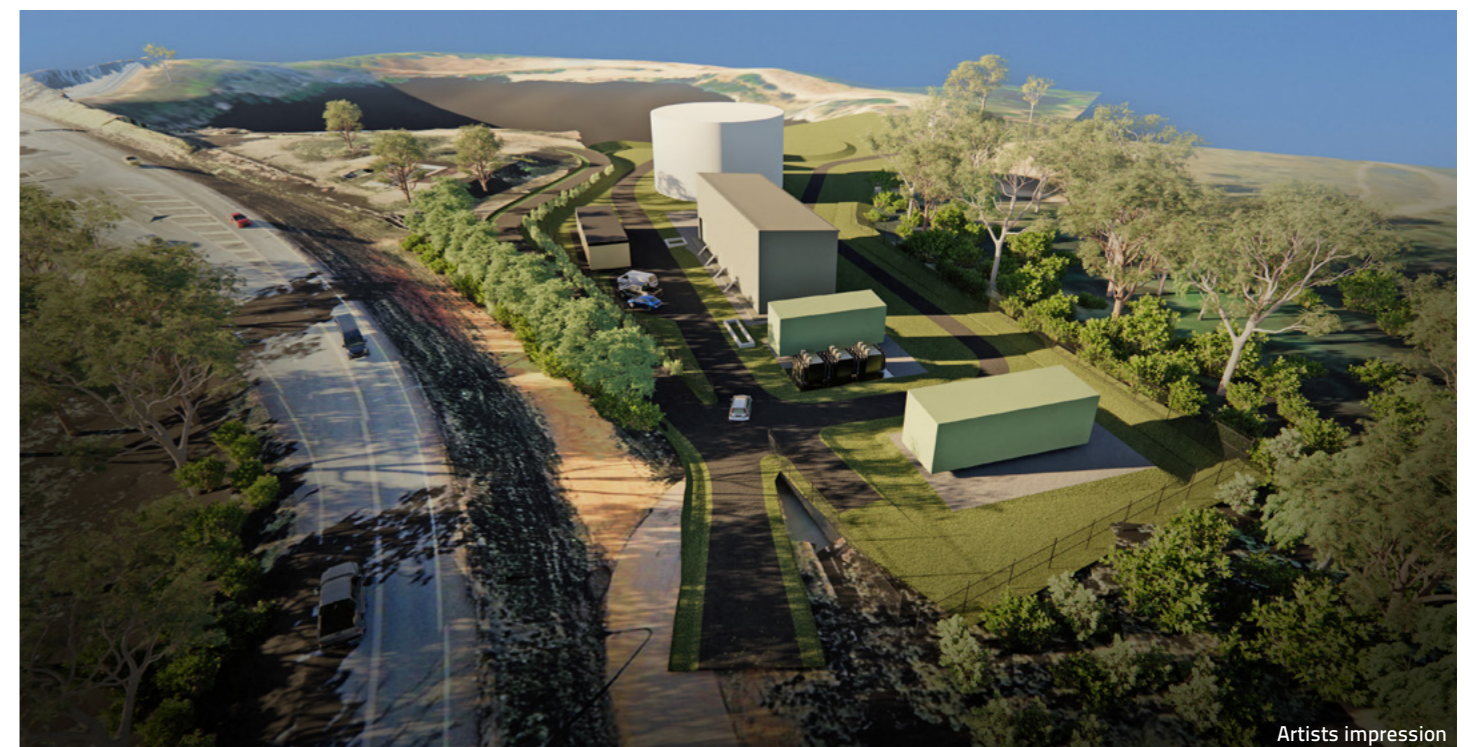
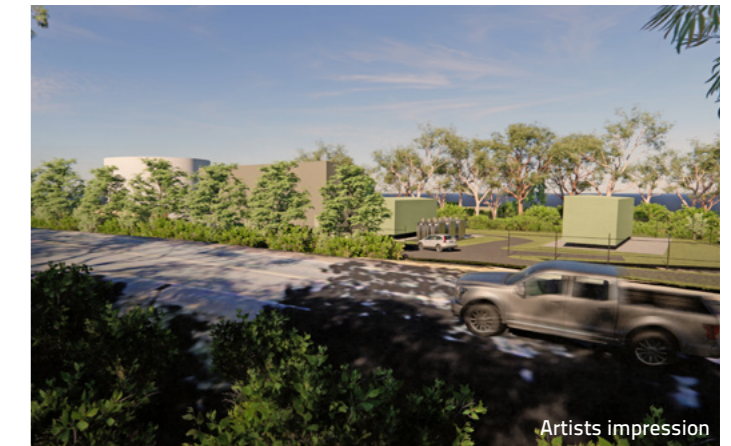
Construction through Caboolture will be a combination of open trenching and underground boring, as shown in the below map. Adjacent residents will be advised directly by construction notifications and signage where there are changed traffic conditions.



## MOODLU QUARRY WORKS

Moodlu Quarry will be used for mid-stream balancing storage to ensure that surplus water is held to meet peak seasonal crop demand of up to three times current daily production.

Moodlu Quarry is critical to the success of the Scheme and from March 2022, will become an active construction zone with strict site access protocols in place.

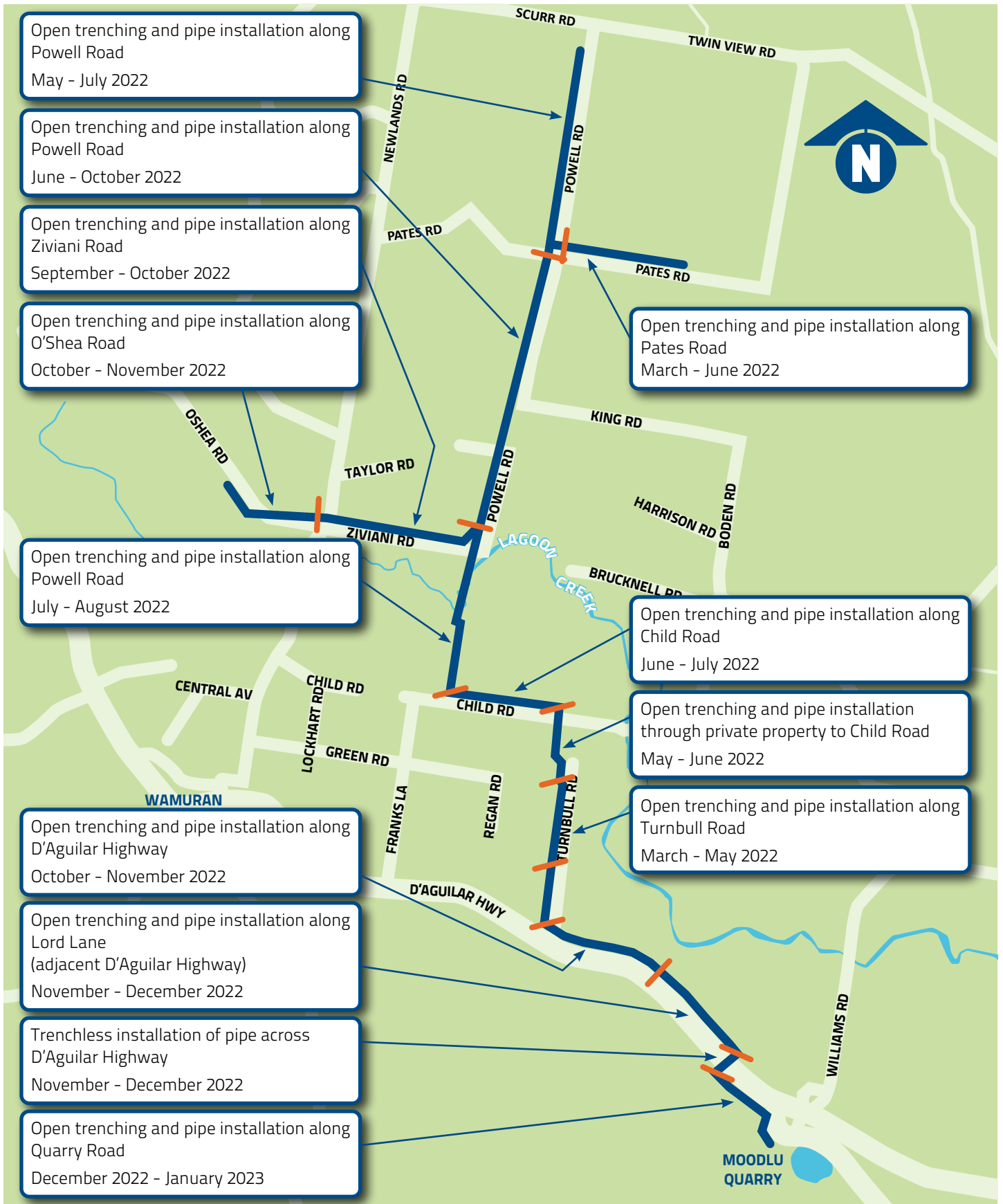


Note: Please note, this represents the best of planning at this time. Given our recent experience with COVID-19 in particular, please accept that this forecast may change.

# WAMURAN REGIONAL WORKS

In Stage 1, water will be delivered to farms from the Moodlu Quarry pump station through another 12km pipeline to safely irrigate turf and crops.

Construction through this area will be predominantly open trenching with some underground boring as shown in the below map.



## For further information

Contact the construction team on 1300 629 170 or email [wamuran@pensar.com.au](mailto:wamuran@pensar.com.au)

Please see our website at: <http://www.unitywater.com/wamuran>

