

# Wamuran Irrigation Scheme



Unitywater

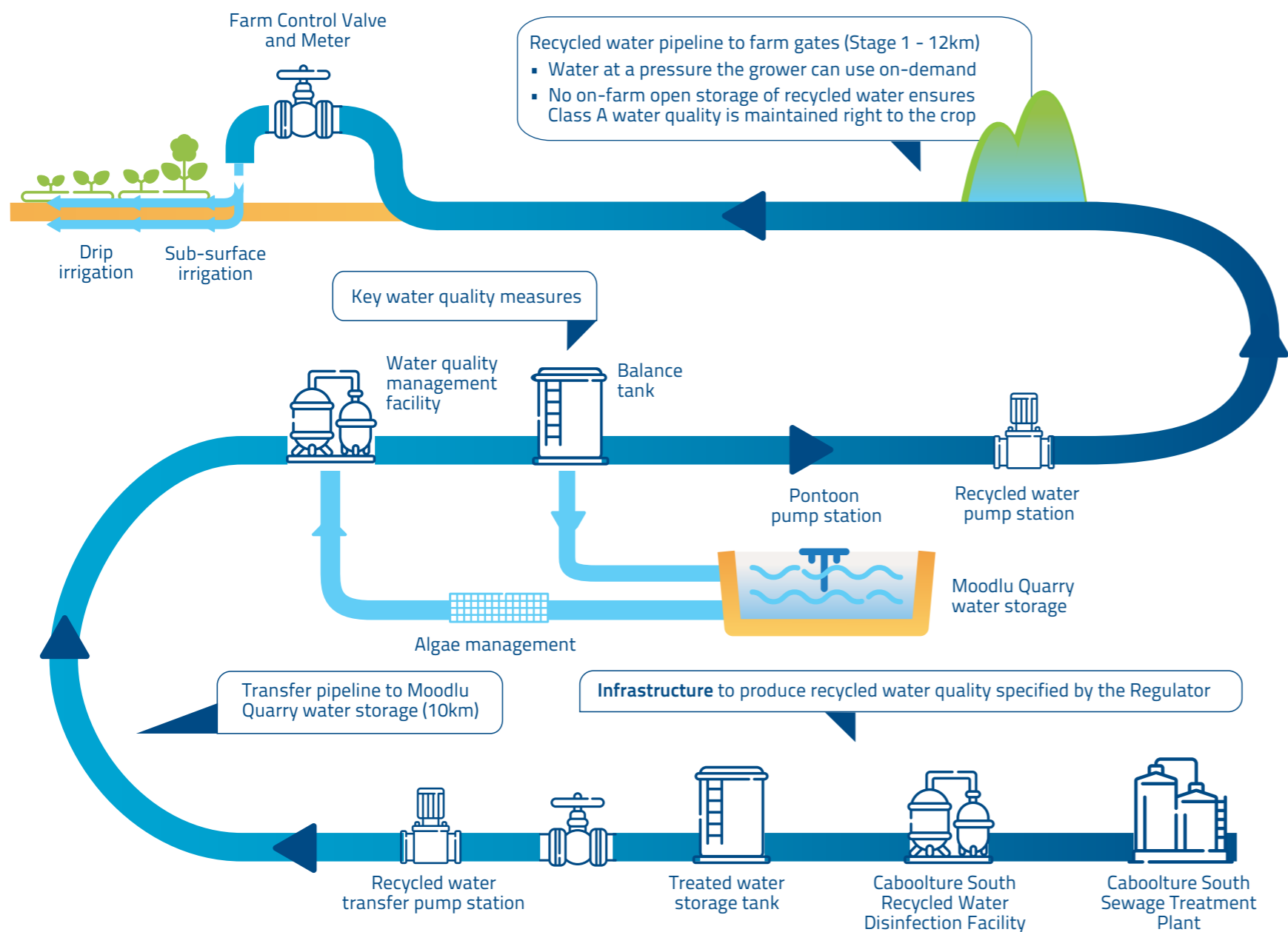
Serving you today, investing in tomorrow.



# Wamuran Irrigation Scheme

The Wamuran Irrigation Scheme will support the region's growth by sustainably managing wastewater from Unitywater's Caboolture South Sewage Treatment Plant (STP) to deliver Class A recycled water to farms in the Wamuran region.

In its first stages the Scheme will deliver about 2.6 gigalitres of recycled water each year – the equivalent of 1051 Olympic swimming pools – to five farming operations in the region. As the population grows and the supply of Class A recycled water increases, more will be distributed and more growers from the region will be able to access the Scheme.



## How the Scheme will operate

Wastewater from the Caboolture South STP will be treated in a disinfection facility before it is transferred via a 10km pipeline to Moodlu Quarry, where it will pass through a water quality management facility. The water can be stored at Moodlu Quarry to meet seasonal crop demand. In Stage 1, water will be delivered to farms through another 12km pipeline to be safely irrigated onto crops.

## Ensuring Class A water quality

Once the Scheme is operational, and following a minimum 13-week water quality validation period, Unitywater must secure an approved Recycled Water Management Plan from the Queensland Government's Office of Water Supply Regulation. This approval will allow the Scheme to safely supply Class A water to minimally processed food crops. In the meantime, and as part of demonstrating reliable and safe water supply compliant with food crop requirements, the water will be provided to a turf farm.

## Scheme benefits

The Wamuran Irrigation Scheme is an important project for the local community and the environment.



Using the recycled water for irrigation will reduce nutrient discharge into the Caboolture River. In Stage 1 alone, 11 tonnes of nitrogen and 1.8 tonnes of phosphorus will be diverted away from the river system.



The Scheme will provide consistent water to growers throughout all seasons, delivering greater certainty for crop planting and higher yields, giving local farmers the confidence to expand their operations.



Wamuran is ideally located within easy reach of the Port of Brisbane and Brisbane International Airport, both of which can facilitate crop export to South-East Asia. It is also located close to the Bruce Highway, enabling transport across the country.



The boost in the region's agribusiness sector will create more jobs, both in agricultural and downstream industries, with positive flow on effects for the local community.

## Project milestones



## Supporting the Wamuran agricultural industry

Five foundation customers were identified using a weighted multi-criteria process that included their location and projected recycled water demand. We also considered a diverse range of crops, with an even mix of seasonal and day/night water requirements, so the Scheme could handle peak demands. Crops in the first stage of the Scheme include raspberries, strawberries, pineapples, avocados and turf. As more water becomes available from the Caboolture South STP, the Scheme will expand to service more local growers.

## Constructing the Scheme

The Scheme will be built by the Wamuran Irrigation Scheme Joint Venture (JV), made up of Pensar and two local growers, Twin View Turf and Pinata Farms. The JV was awarded a contract in October 2019 to assist Unitywater to design and construct the Scheme, following an open-market tender process. The design has been finalised and construction has commenced. The Scheme is due to be operational in early 2024.

**To register your interest in receiving construction updates, please email [wamuran@pensar.com.au](mailto:wamuran@pensar.com.au)**



For further information, click on the QR code or contact Unitywater:

[www.unitywater.com.au/wamuran](http://www.unitywater.com.au/wamuran)  
[community@unitywater.com](mailto:community@unitywater.com)

