



## Instructions on use of the Unitywater standard drawing file for As Constructed submissions.

- a. Only files supplied by Unitywater are to be used for the creation and plotting of DWG files.
- b. Refer to Title blockcompliance.pdf for the compliant format for completing drawing border information.
- c. The basis of the layering convention is set to the SEQ/ADAC standard.
- d. Pre-defined layers have already been created, any additional layers that are required are to be requested directly from Unitywater, layers are not to be created without the agreement of Unitywater, as an automated checking system is in place, any layers within the dwg file that fail these checks, will result in the file being rejected.
- e. For plotting; only the supplied Unitywater CTB file (UW A1-A3) is to be used, failure to do so, may result in the rejection of the file.
- f. Multiple layout spaces are to be used as and when required, layouts to be named by number (as supplied by Unitywater).
- g. All signature boxes are to be completed as per the requirements in the SEQ code for As Constructed submissions, no deviation from this will be accepted.
- h. All Xrefs are to be bound into the drawing file, any Xrefs that are unloaded / not required for the submission are to be removed, as unfound / unloaded Xrefs will result in the drawing being rejected (due to unknown information missing, be it required or not) as required by the SEQ standard.

See below to bind Xrefs:

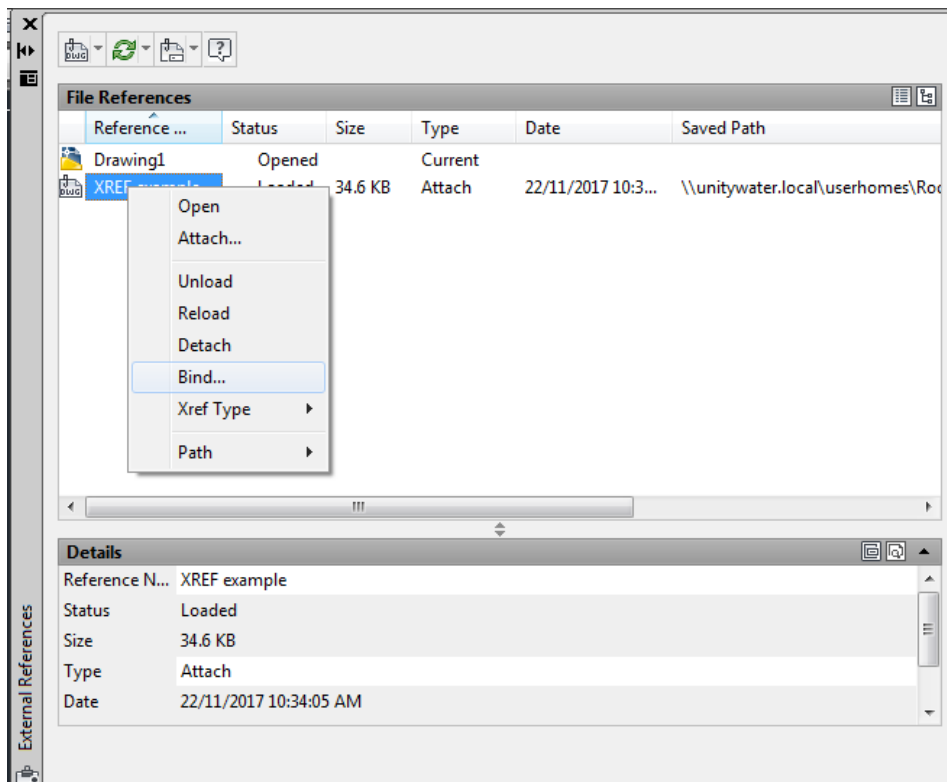




Image files are to be embedded into the drawing files, not referenced, as again, this will come up with file not found, below is one way of embedding the image file into the drawing:

Go to the image file, like Internet Explorer, for example. Do a right-click and you are going to go to Edit. More than likely it's going to bring it up into Paint, or you can go to Paint directly and open the file.

Do Ctrl-A. That selects everything, or you could do a right-click or a Select All – now do a right-click and Copy -- or Ctrl-C.

Back to AutoCAD drawing file. Home tab on the Ribbon and the Clipboard panel, and do a Paste Special, insert it as a Paintbrush Picture. Hit OK. Then simply place the image in the required location.

Alternatively see link below:

<http://www.cadalyst.com/management/embed-image-file-autocad-25061>

**XML Files:**

- a. XML files are to be compliant with the latest version of ADAC.
- b. Naming of XML files are to match that of the DWG file they relate too, i.e. same number and revision. Failure to do so, may result in the rejection of the submission.

**Naming of owner:**

Unless otherwise stipulated, this is to be listed as Unitywater, see below;

	Unitywater	Opera
	Unitywat	Opera
	<Null>	Opera
	MBRC	Opera
	LinkWater	Opera
	Private	Opera
	QUU	Opera
	SCRC	Opera
1	Seqwater	Opera
	Unknown	Opera
	Unitywater	Opera
1	Unitywater	Opera